

The fun of hatching chicks!

R-Com

R-Com brings the marvel of watching eggs hatch in a neat, easy to use digital incubator

The process of incubating and hatching eggs is a delight to watch and is made easy with the new R-Com 3 egg incubator.

Designed in Korea as an educational incubator the R-COM really works!

Three hens eggs are gently warmed and turned automatically as they incubate and the display even counts down each day to tell you when they are due to hatch.

The R-Com is menu driven and extremely easy to use: just choose between one of the 5 settings (chicken, duck, pheasant, quail or mystery bird – to be programmed) and the micro-controller holds the correct temperature, turning and length of incubation. Turning will even stop automatically 2 days prior to hatching; all you need do is top up periodically with water. Detailed, attractive instructions are supplied to guide you through the do's and don'ts.

Features

- For learners, hobbyists, or teachers
- 37.5°C automatic temperature control
- Automatic egg-turning with auto stop 2 days prior to hatching and warning buzzer
- Count down to hatch day
- Optimum conditions of incubation
- LCD shows all information
- 3 indentations accommodate eggs of all sizes from large duck eggs down to quail eggs without any additional device (optional insert for increased capacity)
- BLDC motor for air circulation (low noise, long life)
- Large view window to observe eggs and chicks
- Sensor and alarm if the view window is open
- Sensor and alarm for water supply
- Floating device to prevent water from overflowing
- Robust hygienic plastic construction
- Can be used as a temporary living place after incubation
- 12 months guarantee.



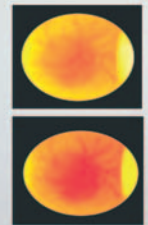
Easy to Use – LCD shows all information

OPTIONAL ACCESSORIES

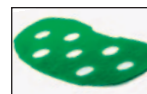
NEW EZ SCOPE

Just replace the clear view window of the incubator with the EZ Scope and watch embryo development without disturbing the incubating eggs.

A ring of bright white LEDs give an excellent view of the eggs contents and you can control the focal point according to your sight but be sure to replace the EZ Scope with the incubator clear view window after observing the eggs.



Clear hatching tray



Anti-slip mat (small tray)



Anti-slip mat (standard tray)



Cigarette lighter socket cord



Small egg tray for 7 quail eggs



Large egg tray for goose egg



Cordless egg candler